



**Lao People's Democratic Republic
Peace Independence Democracy Unity Prosperity**

**Ministry of Public Works and Transport
Department of Water Supply**



Scaling-Up Water Supply, Sanitation, and Hygiene Project

IDA Project No.: SWSSHP (P-164901)

**Jointly Implemented by the Ministry of Public Works and
Transport & the Ministry of Health of Lao PDR**

Abbreviated Resettlement Action Plan Phongsaly Province

- Namly Cluster of Samphanh district,
- Sinxay Cluster of Khua district,
- Sophun Cluster of Mai district, and
- Longnai-Kao Cluster of Bountai district

January 2025

Abbreviation and Acronyms

AH	Affected Household	LFND	Lao Front for National Development
APs	Affected People	MoES	Ministry of Education and Sport
ARAP	Abbreviated Resettlement Action Plan	MoNRE	Ministry of Natural Resources and Environment
	Branch Nam Papa		
DMS	Detail Measurement Survey	MPWT	Ministry of Public Works and Transport
DONRE	District Office of Natural Resources and Environment	NPSE	Nam Papa State Enterprises
DoR	Department of Road	NR1B	National Road No 1 B
DPWT	Provincial Department of Public Works and Transport	NR2E	National Road No 2 E
DRC	District Resettlement Committee	O & M	Operation and Maintenance
DWS	Department of Water Supply	ODS	Open Defecation Free
EG	Ethic Groups	OPWT	Office of Public Works and Transport
EGDF	Ethnic Groups Development Framework	PIU	Project Implementation Unit
EGDP	Ethic Groups Development Plan	PMU	Project Management Unit
EIA	Environmental Impact Assessment	OP/BP	Operation Policy/Bank Procedure
ESD/PTI	Environmental and Social Division of PTI	POM	Project Operation Manual
ESMF	Environmental and Social Management Framework	PRC	Provincial Resettlement Committee
ESOM	Environmental and Social Operations Manual	PTI	Public Works and Transport Institute
ESU	Environmental and Social Unit Feedback and Mediation	RAP	Resettlement Action Plan
FMC	Committee	RMF	Road Maintenance Fund
	Free, prior, and informed consent	RMD	Road Maintenance Division
FPIC			
GoL	Government of Laos	RoW	Right of ways
GRC	Grievance Redress Committee	RPF	Resettlement Policy Framework
GRM	Grievance Redress Mechanism	SA	Social Assessment
GRMS	Grievance Redress Mechanism Services	SBCC	Social Behavior Change and Communication
IEE	Initial Environmental Examination	SIA	Social Impacts Assessment
LACR	Land acquisition and compensation report	SWSSHP	Scaling Up Water Supply, Sanitation and Hygiene Project
Lao PDR	Lao People's Democratic Republic	VRC	Village Resettlement Committee
LAR	Land acquisition and resettlement	WASH	Water Sanitation and Hygiene
MoH	Ministry of Health	WB	World Bank
LWU	Lao Women's Union	WTP	Water Treatment Plan

Table of Contents

Executive Summary	4
1 Project Description	10
2 Analysis of Impact of Water Supply Project in Phongsaly	11
3 Lao Legal Framework and World Bank Requirement	17
3.1 World Bank Policy on Involuntary Resettlement (OP/BP4.12)	19
3.2 Key Differences in Lao PDR Law and World Bank Policies	20
4 Types of Impact	20
5 Socio-Economic Profile of Affected People	21
5.1 Characteristics of the AHs (Demography, ethnicity, and religions).....	21
5.2 Livelihood Activities and Vulnerability Households	23
5.3 Ethnic Group in the project area.....	23
6 Eligibility, Entitlement, and rehabilitation of the permanent impacts	30
7 Public Consultation, Participation, and Information Disclosure	35
8 Grievance Redress Mechanism	37
9 Implement Schedules	43
10 Monitoring and Reporting	47
11 Cost/Budget	47

Executive Summary

1. This Abbreviated Resettlement Plan (ARAP) for the Scaling-up Water Supply, Sanitation and Hygiene Project (SWSSHP), by the Ministry of Public Work and Transport (MPWT) and the Ministry of Public Health (hereafter ‘the Project’’) has been prepared for Namly Cluster of Samphanh district, Sinxay Cluster of Khua district, Sophun Cluster of Mai district, and Longnai-Kao Cluster of Bountai district clusters water supply systems (Nam Papa) sub-projects, in Phongsaly Province in order to comply with the RPF of the Project that requires development of ARAP if the number of the PAP is lower than 200, which is the case of Phongsaly Sub-Projects that has 6 HHs comprising of total PAPs of 29 people of whom 15 are females.
2. Details of the raw water intake, starting and ending points of the raw water pipelines, access road to the intake and water treatment plant, and water treatment plant are as follows:
3. **Namly Cluster-Samphanh district**
 - Proposed water intake is on the Namly Brook is located on the elevation of 898 m.s.l at the coordinates of X= 194928; Y = 2346515. The intake area is 2,500 m².
 - The raw water pipeline: System is gravity-fed, Raw water transmission pipeline will be constructed using HDPE pipes of size DN90 to transfer the water from water intake point in Namly Brook to the Water Treatment Plant (WTP) which is located at a distance of 7.452 km away from the water intake. Total area of WTP is 3,100 m².
 - 6.78 kms of HDPE pipelines will be laid out from the WTP to Namly villages for gravity-fed distribution pipeline network within the core service area. HDPE pipes will be used for water distribution from WTP to the core service area. Size of pipes to be used for pipeline networks is DN110, DN90, DN 75 and DN63.
 - 3.2 kms of pipeline network will be laid out to provide households connection to 219 households in **Namly** village using HDPE pipe of size DN50, DN40 and DN25.
 - A transformer of 50 KVA from power electric will be installed to ensure the static power supply to WTP and not to interfere in the existing power supply of the villagers
 - The raw water transmission pipelines and treated water distribution pipelines will be laid out underground at a depth ranging between 0.7 to 1.2 meters
 - A Nam Papa Cluster office will be constructed comprising of operator room, separate storage facility and chemical room at Ban Namly. Total area of the office is 1,600 m².

- An access road of size 5 meters wide and 147-meter-long will be constructed to access the WTP from the main road. The total area of the road including the right of way is 3,675 m².

4. **Sinxay Cluster-Khua district**

- The proposed water intake is on the Houay Phea Brook is located at the elevation of 480 m.s.l at the coordinates of X= 211723; Y = 2334232. The intake area is 2,500 m².
- The raw water pipeline: System is gravity-fed, Raw water transmission pipeline will be constructed using HDPE pipes of size DN90 to transfer the water from water intake point in Houay Phea Brook to the Water Treatment Plant (WTP) which is located at a distance of 2.8 km away from the water intake. Total area of WTP is 3,600 m².
- 2.8 kms of HDPE pipelines will be laid out from the WTP to Sinxay village for gravity-fed distribution pipeline network within the core service area. HDPE pipes will be used for water distribution from WTP to the core service area. The size of pipes to be used for pipeline networks is DN110, DN90, DN 75 and DN63.
- 12.6 kms of pipeline network will be laid out to provide households connection in Sinxay village using HDPE pipe of size DN50, DN40 and DN25.
- 3.27 kms of pipeline network will be established to provide household connection to 143 households in Sinxay village comprising of HDPE pipes ranging from DN40 and DN25.
- A transformer of 50 KVA from power electric will be installed to ensure the static power supply to WTP and not to interfere in the existing power supply of the villagers
- The raw water transmission pipelines and treated water distribution pipelines will be laid out underground at a depth ranging between 0.7 to 1.2 meters.
- A Nam Papa Cluster office will be constructed comprising of an operation room, separate storage facility and chemical room at Ban Sinxay. The office area is 1,600 m².
- An access road of size 5 meters wide and 422-meter-long will be constructed to access the WTP from the main road. The total area of the road including the right of way is 6,750 m².

5. **Sophon Cluster-Mai district**

- Proposed water intake is on the Houay Yei Brook which is located at an elevation of 512 m.s.l. at the coordinates of X= 277029 ; Y = 2344429. Total area of intake is 2,500 m².

- 6.39 km gravity-fed HDPE raw water transmission pipeline of size DN90 will be laid out to transfer raw water from water intake point in Houay Yei Brook to the WTP. Total area required to construct the WTP is 2,800 m².
- 9.8 km of HDPE pipelines from WTP to Sophun villages for gravity-fed distribution pipeline network will be laid out within the core service area using HDPE pipe of size DN110, DN90, DN 75 and DN63.
- 4.35 kms of pipeline network will be laid out to provide household connections to 238 households in Sophun and Sopnao villages comprising using HDPE pipes of size DN40 and DN25.
- The raw water pipeline and distribution pipeline will be laid out underground at depths ranging between 0.7 to 1.2 meters.
- A transformer of 50 KVA from power electric will be installed to ensure the static power supply to WTP and not to interfere in the existing power supply of the villagers.
- A Nam Papa cluster office will ~~be constructed with~~ include an operator~~ion~~ room, storage facility and chemical room at Ban Sophun. The office area is 1,463 m².
- An access road of size 5 meters wide and 80-meter-long to access the WTP from main road will be constructed. The total area including the right of way is 1,750 m².

6. **Longnai-Kao Cluster-Bountai district**

- Proposed water intake is on the Houay Vey Brook which is located at an elevation of 955 m.s.l. at the coordinates of X= 799077; Y = 2354703. Total area of intake is 2,500 m².
- The raw water pipeline: System is gravity-fed, Raw water transmission pipeline will be constructed using HDPE pipes of size DN90 to transfer the water from water intake point in Houay Vey Brook to the Water Treatment Plant (WTP) which is located at a distance of 7.352 km away from the water intake. Total area of WTP is 3,600 m².
- 15.472 km of HDPE pipelines from WTP to Longnai-Kao, Longnai-Mai, and Bornoy villages for gravity-fed distribution pipeline network will be laid out within the core service area using HDPE pipe of size DN110, DN90, DN 75 and DN63.
- 4.065 kms of pipeline network will be laid out to provide household connections to 245 households in Longnai-Kao, Longnai-Mai, and Bornoy villages comprising using HDPE pipes of size DN63 and DN25.

- The raw water pipeline and distribution pipeline will be laid out underground at the depths ranging between 0.7 to 1.2 meters.
 - A transformer of 50 KVA from power electric will be installed to ensure the static power supply to WTP and not to interfere in the existing power supply of the villagers.
 - A Nam Papa cluster office will ~~be constructed with~~ include an operator~~ion~~ room, storage facility and chemical room at Ban Longnai-Kao. ~~Total~~The total area of the office is 1,600 m².
 - An access road of size 5 meters wide and 510-meter-long to access the WTP from main road will be constructed. The total area including the right of way is 8,160 m².
7. The SWSSHP follows a “plot to plot approach”¹, thereby avoiding land acquisition impacts as much as possible for the construction water supply system. Impacts of agricultural and residential land will be temporary during civil works for installation of the water transmission pipeline underground that will be monitored at the time of construction.
8. The ARAP identifies measures to ensure that PAPs are:
- a. informed about the Nam Papa and consulted the community on the proposed project and agree in principle with the Project;
 - b. informed about their options and rights pertaining to land acquisition impacts;
 - c. Consulted on, offered choices among, and provided with suitable compensation and/or resettlement alternatives;
 - d. Provided prompt and effective compensation at full replacement cost for losses of assets attributable directly to the Project.
9. Compensation principles and policy framework for land acquisition and involuntary resettlement are governed by laws, decrees, and regulations of the Government of Lao PDR, principally the Constitution (amended 2015), the Land Law (Updated in 2019), the Water Supply Law 2009, the Law on Handling of Petitions (Grievance Redress) No.035/President (2015), The Law on Resettlement and Occupation No.204/President (August 2018), the Decree 84 Compensation and Resettlement of the Affected People by Development Projects (April 2016), Decree No207/GoL (2020) on ethnic affairs, Decree 289/Gol dated 20 October 2022 on the Environmental Impact Assessment, Public Involvement Guideline by MoNRE (2012). WB’s Policy on Involuntary Resettlement (OP/BP 4.12). The OP/BP 4.12 provides essential guidance on objectives and principles that are applicable in projects generating land acquisition and resettlement-related impacts.

¹ Plot to plot approach is to visit all subproject sites (from one plot to other) including intake, raw water distribution pipeline, WTP and clear water distribution pipeline

10. The Project will not involve physical relocation of permanent structure and/or involve resettlement of peoples. However, it will have minor acquisition of the agricultural land of 3 HHs that includes 1 AH in Namly cluster by the WTP and 2 AHs in Longnai-Kao WSS cluster by the access road to the WTP. ~~Permanent~~The permanent impact on agricultural land is less than 5% of their total agriculture areas. The landowners have been informed and consulted on the nature of the impacts. The owner of the affected land plot (480 m²), Mr. Alor, in Namly Village has the land title and will be compensated with land upgrading at the replacement costs and issuance of the new land, whereas the other 2 AHs (630 m² and 600 m²), Mr. Khamxay and Mr. Yot, in Longnai Kao village with only land use tax payment receipts will be compensated with the issuance of land use certificate for the remaining areas of the 2 affected plots.
11. Four HHs (3HHs in Sophun and 1HH in Longnai Kao) with 6 rubber trees that need to be cut for the access road to the WTP and cardamom bushes in 480 m² of 1 HH (see [Table 2](#)). All ~~5~~4 HHs with affected rubber trees and cardamom bushes agreed ~~in~~to make a voluntary contribution to the project. The voluntary contribution form agreements have been signed by the heads of the ~~A~~H HHs and certificated by village authorities. [See Appendix 6](#).
12. The Raw water transmission pipe and pipe distribution system will have temporary impacts during pipe lay out, the affected areas will be restored to the same condition prior to the civil works under the responsibility of the Contractor.
13. The owners of 76 temporarily affected agricultural land by the raw water pipeline have been consulted comprising of 32 HHs in Namly cluster, 9 HHs in Sinxay cluster, 17 HHs in Sophun cluster, and 18 HHs in Longnai-Kao cluster. Temporary impact is associated with digging of trenches for installation of the pipelines underground of the agricultural land. Owners of these agricultural land plots have been consulted and agreed with pipe installation underground of their productive land. During the civil works, the contractor will lay out the raw water pipeline underground at a depth between 0.7-1.2 m through the agricultural land and it will be restored to the original condition so that the ~~land owners~~landowners can grow crops in the next season without any adverse impact. Among the 32 HHs in Namly cluster with temporary impacts on their productive land, 8 HHs grow galanga, 23 HHs grow job's tear and 1 HH has fallow banana field, among the 9 temporary affected households in Sinxay 7 HHs grow cardamom, 1 grows rubber trees and 1 grows teak tree. All 17 temporary affected households in Sophun cluster will have the edge of their rice fields (15 HHs) and gardens (2HHs) affected whereas amongst the 18 HHs in Longnai Kao cluster also have their paddy field affected ~~temporary~~temporarily. All agreed to allow the passing of the raw water pipelines. The contractor will layout the pipeline with minimum disturbance to the trees and wherever necessary manual labor will be used to avoid uprooting of trees of temporary affected HHs. [See Appendixes 7-10](#).
14. The clear water pipelines will ~~temporary~~temporarily affect the house front yard or cement slabs of 32HHs which include 7 Lao Tai, 5 Tai Deng, 14 Khmu, 2 Hmong, 2 Tai Dam and

1 Phounoy and 1 Hor ethnic HHs. All ethnic groups are well integrated into the Lao ~~society~~society, and they can speak and understand Lao language. [See appendix 11-13.](#)

15. Public consultation meetings have been organized in February and October 2024 in the villages of all 4 clusters to inform about the project design, expected environmental and social impacts, including the land acquisition, the impacts on trees and crops and compensation principles of the Project. Overall, the villagers supported the construction of water supply system in all 4 sub-projects and expressed willingness to voluntary contribution of minor impacts that do not affect their livelihoods. In addition, they did not have any objection to ~~allow~~allowing pipelines ~~pass~~to pass through their land and their front yards. List of participants in October 2024 consultation meetings are given in the [Appendixes 14-17.](#)
16. Grievances related to the implementation of this ARAP will be managed by the Grievance Redress Committee (GRC) through the Project GRM and the process will follow grievance procedures. PAP can make ~~complaint~~complaints or appeal on all aspects of project design and implementation, including issues related to resettlement in written form or verbally and it can be anonymous if the PAP does not want to disclose itself. Local translator are people from the affected villages, District GRM Committee, who can speak the ethnic and Lao languages will be used to help the ethnic complainant who cannot communicate well in Lao language.
17. The cut-of-date (**Appendix 1**) has been issued on 04 August 2023 by the Provincial DPWT and announced at the consultation meetings with the villagers in the same month. Assets valuation is based on the approved unit rates for development projects by the Governor of Phongsaly in 2022. [See appendix 2.](#)
18. Construction supervision consultants will also monitor the compliance of the social and environmental ~~safeguards~~safeguards including impact of the assets of the people. During the construction phase, if there were any adverse impact, it will be reported to DPWT of MPWT and the Grievance Redress Committee located in the provincial PWT office, on matters related to land acquisition and impacts to structures, trees and crops.
19. The total budget for compensation is estimated ~~about~~to be about **USD 46,520 (Forty six thousand five hundred and twenty USD)** that will include in kind compensation for the affected land. The new land title will be issued for the 2 ~~Ah~~HHs (Mr. Yot and Mr. Khamxay) of Longnai Kao cluster and land plot will be leveled for Mr. Alor of Namly cluster. The costs for the issuance of new land title and land use certificates for 3 permanent affected land plots and grading 1 affected land plot in Namly Village, will be covered by the District Administrative Offices of Samphan and Bountai. The new land title and land use certificates will be issued for the remaining areas of the affected parcels. The costs for restoration of the affected cement labs along the RoW will be covered by the contractor during the construction phase and the costs for internal monitoring will be covered by PMU.

1 Project Description

20. The Scaling-Up Water Supply, Sanitation and Hygiene Project (SWSSHP) supports the multi-sector convergence on nutrition. This US\$25 million project is funded by the World Bank. SWSSHP is implemented by the Ministry of Public Works and Transport (MPWT) and the Ministry of Health (MOH). A Project Management Unit has been established in the Department of Water Supply under the MPWT and a Component Management Unit has been established in the Department of Hygiene and Health Promotion under MOH.

21. The Project Development Objectives (PDOs) are to provide access to improved water supply, sanitation, and hygiene services in 115 priority target villages in twelve districts in four northern provinces (Xiengkhuang, Huaphanh, Oudomxay, and Phongsaly) for nutrition convergence, and to strengthen the capacity of select institutions to improve service delivery. The project has four components as follows.

Component 1: Community empowerment and integrated WASH delivery

1 (a) Implementation of integrated WASH project cycle

1 (b) Water supply infrastructure

1 (c) Capacity building of Department of Water Supply (DWS) for sustainability

Component 2: Community water supply, sanitation and hygiene

2 (a) Monitoring

2 (b) Capacity building of Nam Saat for sustainability of community water supply systems

2 (c) Policy for sanitation and hygiene

Component 3: Implementation support, sector development and coordination

3(a) Project Management Unit

3(b) Component Management Unit

Component 4: Contingency emergency response

22. This ARAP identifies measures to ensure that APs are: (1) informed about the proposed project impact and agree in principle with the Project;(2) informed about their options and rights pertaining to land acquisition impacts (if any); (3) consulted on, offered choices among and provided with suitable compensation and/or resettlement alternatives, and (4)

provided prompt and effective compensation at full replacement cost for losses of assets attributable directly to the Project.

2 Analysis of Impact of Water Supply Project in Phongsaly

23. The Project will not involve physical relocation of permanent structure and/or involve resettlement of peoples. The Project involves minor land acquisition the agricultural land of one HH for the access road to the WTP in Namly Village and few trees and crops in this sub project areas. Raw water transmission pipe and pipe distribution system will have temporary impacts during pipe ~~lay-out~~ layout, the affected areas will be restored to the same condition prior to the civil works under the responsibility of the Contractor. Given the permanent impact will only ~~related~~ be related to ~~few~~ a few households the Abbreviated RAP² (ARAP) which will be required when involuntary land acquisition occurs. This ARAP is an integral part of the Environment and Social Management Plan (ESMP) and is included as an annex to this document.

Namly Cluster Water Supply Sub-Project

24. The Namly cluster water supply sub-project in Samphanh district, Phongsaly province will be sourced from surface water sources from Namly Brook.

25. **The Raw Water Intake** is located at elevation 898 m.s.l at the longitude and latitude at X= 194928; Y = 2346515. The intake is located in the boundary of Namly village of Samphanh district.

26. **Raw water pipeline** will pass through the community forest land and agricultural land of 32 HHs which include galanga fields and fallow land plots. However, the pipeline will be placed ~~avoiding~~ to avoid disturbance to galanga bushes. ~~W-~~ where it is not possible the bushes will be removed and replanted on the same plots under the responsibility of the Contractor. If civil works or pipe lay out were carried out during the dry season there would be no ~~er~~ crop in the fallow field. After laying out of the pipelines, the affected areas will be restored to ~~the~~ their original condition. The owners of the temporary affected land have been ~~consulted~~ consulted, and they have allowed ~~installation~~ installation of the pipeline underground through their galanga, and fallow fields of banana, maize and jobs' tears. See [Appendix 7](#) for details of the length of each affected land parcel.

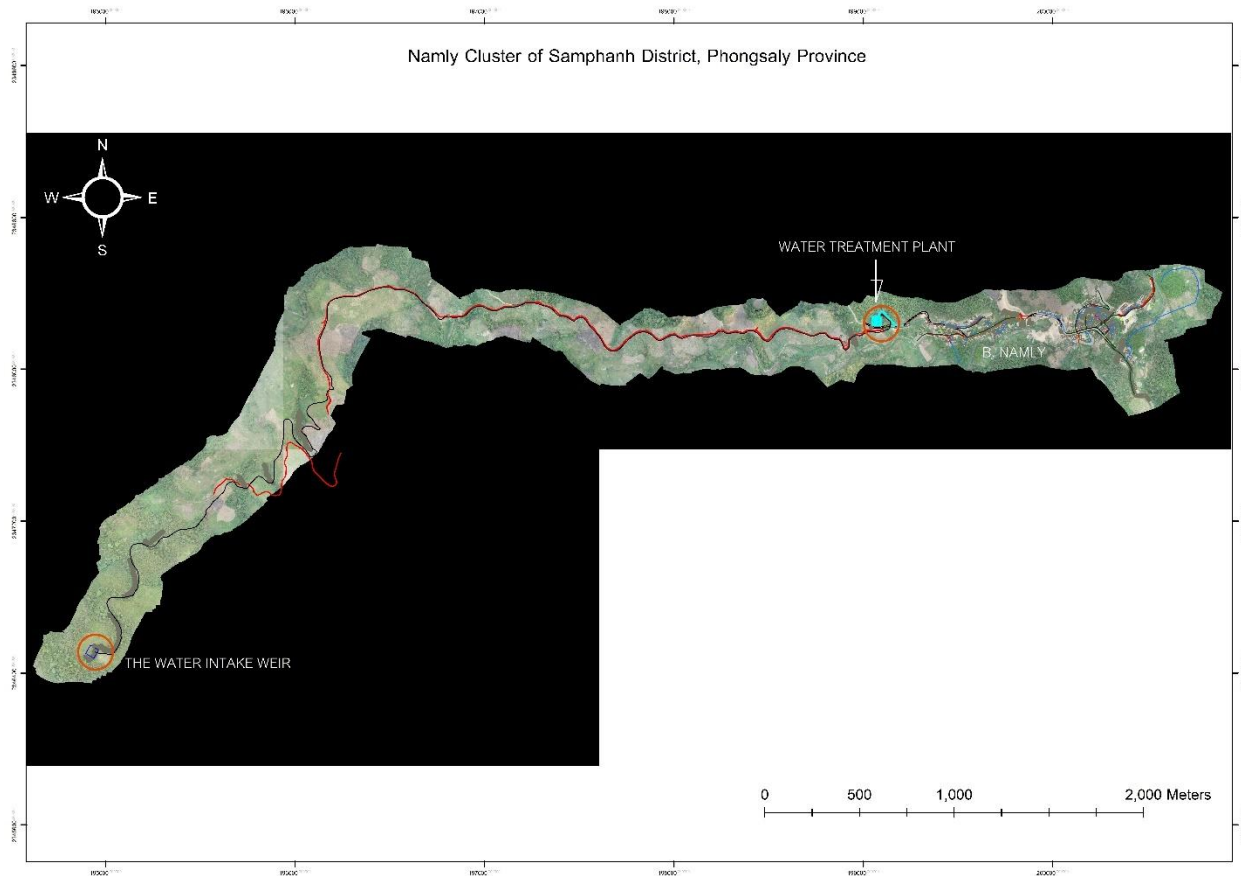
27. **The Water Treatment Plant** will be installed in the area of 3,100 m² at the village communal land.

² In Lao PDR, per the Decree 84/GoL, preparation of a Land Acquisition and Compensation Report (LACR) is needed when the impacts are small and scope of the report is similar to the abbreviated RAP (ARAP) as defined in WB OP/BP 4.12 (as defined in OP/BP 4.12, Annex A). Resettlement Framework of the project requires the development of ARAP if the number of the affected people are less than 200.

28. **Road access to Water Treatment Plant:** 147-meter long and 5 meters wide access road will be constructed from the NR1B to the water treatment plant (WTP). Access road will pass through 1 private land of Mr Alor of 480 m² of his total agricultural land of 14,800 m² and village common land of Namly village, Samphanh district, Phongsaly province. Around 20 meters from both sides of the access road, there are small trees and bushes in both sides. [See Appendixes 3-5.](#)

29. The Proposed **Water Distribution Pipeline** from WTP to Namly village is 6.78 km. The pipeline network to households in Namly village is 3.2 km long. This water distribution pipeline will be placed beside the RoW of main road No.1B to avoid the impact on the structures including the houses, cement slabs, trees etc. of the community members in surrounding area. However, it will affect cement slabs in front of houses of 10 HHHs, which is temporary and after civil works or pipe lay out, the area needs to be restored by the Contractor. [See Appendix 11.](#)

Figure 1: Location plan of Namly cluster Water Supply Sub-Project



Source: Final project design report, February 2024

Sinxay Cluster Water Supply Sub-Project

30. The Sinxay cluster water supply sub-project in Khua district, Phongsaly province will be sourced from surface water sources from Houyphea Brook.
31. **The Raw Water Intake** of Sinxay cluster water supply system sub-project in Khua district, Phongsaly province, is located at elevation of 480.m.s.l at the longitude and latitude at X= 211723; Y = 2334232. The intake is located on the boundary of Houyphea village of Khua district.
32. **The Raw Water Pipeline** from intake to the WTP will be 2.8 km long. ~~Raw.~~ Raw water pipeline will pass through the communal land. Pipelines will be installed at the edge of the land plots to the ~~great~~ greatest possible extent. Lay out of the pipeline will temporary affect the private agricultural land of 9 HHs (cardamom garden of 7HHs, rubber tree garden of 1 HH, teak tree garden of 1 HH) in Sinxay village but it will not affect the trees and crops. Nevertheless, farmers can practice ~~the farming~~ farming as usual after completion of ~~the~~ civil works. Owners of the agricultural land have been consulted during the village public ~~meeting~~ meeting, and they agreed to allow the passing of the pipeline through their agricultural land. See [Appendix 8](#) for details of the length of each affected land parcel.
33. The **WTP** has the total area of 3,600 Square meters of public land.
34. **Road access to Water Treatment Plant:** ~~The:~~ The road access to WTP of 5 meters' width and 422 meters' length will be constructed from the main road to the WTP. Access road will start from the junction feeder road with the NR1B and through the public land area. The road access to WTP will cross Namnoy river, and there is an office of agricultural service center about 20 meters far away after ~~eross~~ crossing the river.
35. **Water distribution pipeline** from WTP to Sinxay village is 12.6 km. The pipeline network to households in Sinxay village is 3.27 km long. This water distribution pipeline will be placed beside the RoW of the NR1B and NR2E to avoid the impact on the structures including the houses, porches, cement slab in front of the houses etc. in surrounding areas. However, cement slabs of 13 HHs of 427 meters will be ~~temporary~~ temporarily affected. The impacted areas along the pipe lay out, including the cement slabs and the RoW of the two main roads have ~~thea~~ total length of about 1,162 meters that need to be restored by the Contractor, after pipeline installation. See [Appendix 12](#) for details of the length of each affected land parcel.

Figure -2: Location Plan of Sinxay Cluster Water supply sub-Project



Source: Final project design report, February 2024

Sophon Cluster Water Supply Sub-Project

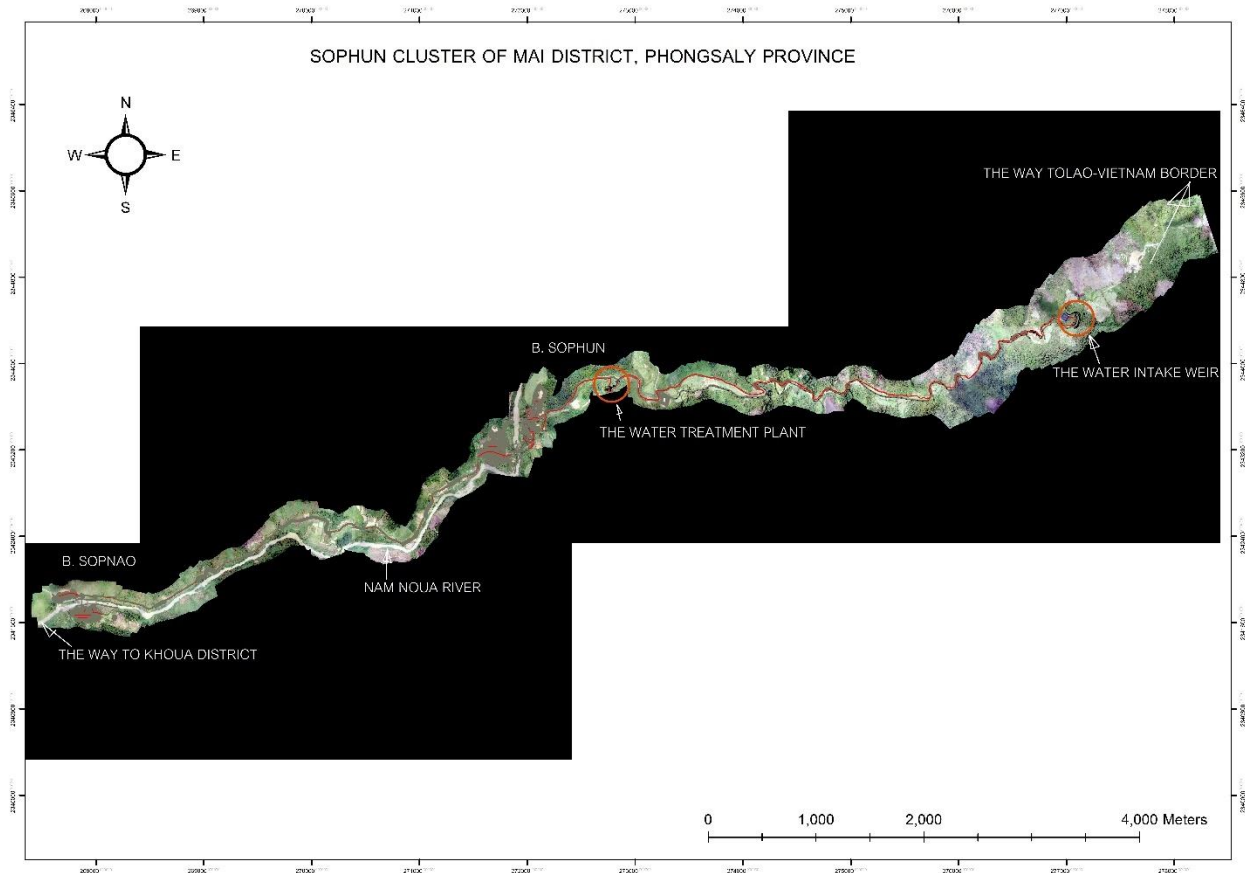
36. The Sophon cluster water supply sub-project in Mai district, Phongsaly province will be sourced from surface water sources from Houy Yei Brook.

37. **The Raw Water Intake** Sophon cluster water supply system sub-project in Mai district, Phongsaly province, is located at elevation of 512.m.s.l at the longitude and latitude at X=277029. Y=2344429. The intake is located on the boundary of Sophon village of Mai district.

38. **The Raw Water Pipeline** from intake to the water treatment plant will be 6.39 kms long. Raw water pipeline will pass through the community land (some parts has rock along the Houy Yei brook), along the edge of the private paddy rice fields, gardens, and along the feeder road to the farmland and shoulder of NR2E. Pipelines will be installed along embankment of paddy fields of 17 HHs in Sophon Village to the greatest possible extent. ~~The civil~~Civil works will be carried out during the dry season thus there ~~is no crop~~are no crops in the field. Owners of the agricultural land have been consulted during the village public ~~meeting~~meeting, and they agree to allow the passing of the pipeline through their agricultural land with the condition that the affected area must be restored after the completion of the pipe lay out. [See Appendix 9](#) for details of the length of each affected land parcel.

39. **The WTP** with the total area of 2,800 square meters is located in the public land.
40. **Access road to Water Treatment Plant:** The road access to WTP of 5 meters' width and 112 meters' length will be constructed from NR2E to the WTP. Access road will start from the junction of the feeder road from NR2E. Project has planned to construct the access road to the WTP with 5 meters width and 112 meters through the existing community **pathway** to the fields in Sophun village with no impact on private land. However, rubber trees of 3 HHs that encroached that communal land have agreed to cut the 20 affected rubber trees without any charge to the project (Mr. Bounpheng : 10 trees, Mr. Khamnor : 6 trees, and Mr. Phanphik 4 trees). **See Items 6.2, 6.3, 6.4 of Appendix 6.**
41. Proposed **water distribution pipeline** from WTP to Sophun village is 9.8 km. The pipeline network to households in Sophun and Sopnao villages is 4.35 km long. The distribution pipeline will be installed along the RoW of NR2E to avoid the impact on the private structures in surrounding areas. However, the cement slabs of 13 HHs (Sophun: 9 HHs and Sopnao: 4 HHs) will be affected by the pipe lay out. After the civil works, the impacted areas of 167 and 81 meters in Sophun and Sopnao respectively need to be restored after pipeline installation. **See Appendix 13.**

Figure-3: Location Plan of Sophun Cluster Water Supply Sub-Project

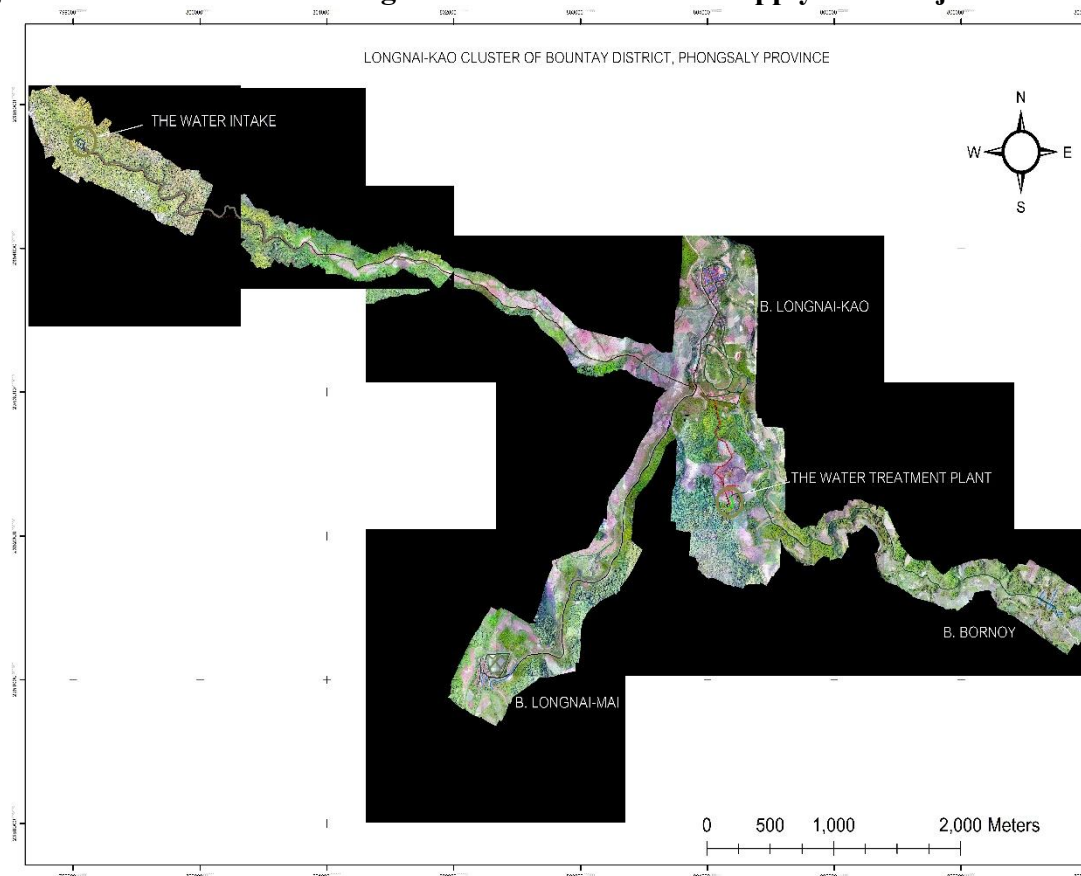


Source: Final project design report, February 2024

Longnai-Kao Cluster Water Supply Sub-Project

42. The Longnai-Kao cluster water supply sub-project in Bountai district, Phongsaly province will be sourced from surface water sources from Houy Viey Brook.
43. The **Raw Water Intake** of this sub-project in Bountai district, Phongsaly province, is located at elevation of 930.m.s.l at the longitude and latitude at X= 799077. Y=2354703. The intake is located on the boundary of Longnai-Kao village of Bountai district
44. The **Raw Water Pipeline** from intake to the water treatment plant will be 7.352 kms long. Raw water pipelines will pass through the community land, the edge of paddy land of 18 HHs in Longnai Kao. There is community forest land; bush and grass in the edge of paddy land, bushes and grass along the community ~~path-way~~ pathway. To minimize the impact, the pipeline will be placed along the embankment of the paddy field. ~~Pipe-lines~~ Pipelines installation will be ~~carried~~ carried out during the dry season thus there ~~is no crop~~ are no crops in the field and agricultural activities. After civil works the impacted areas will be restored by the Contractor to ~~original~~ their original condition. Owners of the agricultural land have been consulted during the village public ~~meeting~~ meeting, and they ~~are agreed~~ agreed to allow the passing of the pipeline through their agricultural land. [See Appendix 10 for details of the length of each affected land parcel.](#)
45. The **WTP** is located in ~~the an~~ an area of 3,600 Square meters that located ~~in the on~~ on communal land area.
46. **Road access to WTP:** 510-meter long and 5 meters wide access road will be constructed from the main road No.1425 to the WTP. Project has planned to construct the access road to the WTP with 5 meters width and 510 meters long that will pass through private land plots of Mr. Khamxay and Ms. Teang (630 m²) for the rubber tree plantation, and Mr. Yot and Ms. Ly (600 m²) (fallow land) in Longnai-Kao village of Bountai district, Phongsaly province. Both affected couples have been consulted on the impacts on their land and rubber trees (Khamxay: 6 rubber trees of 5 years of age). [See Item 6.5 & 6.6 of Appendix 6.](#)
47. **Proposed Water Distribution Pipeline** from WTP to Longnai-Kao, Longnai-Mai, and Bo-Noy and villages is 15.472 kms. The pipeline network to households in Longnai-Kao, Longnai-Mai, and Bo-Noy villages is 4.065 kms long. This water distribution pipeline will be placed along the RoWs of the provincial roads No.1425 and road No.1102 to avoid the impact on the private structures in surrounding area. After pipe installation the impacted areas need to be restored by the Contractor. It will be no temporary impacts on the front houses.

Figure-4: Location Plan of Longnai-Kao Cluster Water Supply Sub-Project



Source: Final project design report, February 2024

3 Lao Legal Framework and World Bank Requirement

48. Compensation principles and policy framework for land acquisition and involuntary resettlement are governed by laws, decrees and regulations of the Government of Lao PDR, principally the Constitution (amended 2015), the Land Law (updated in 2019), the Road Law 1999, the Law on Handling of Petitions (Grievance Redress) No 035/President (2015), the Law on Resettlement and Occupation No 204/President (August 2018), the Decree 84 Compensation and Resettlement of the Affected People by Development Projects (April 2016), Decree No 207/GoL (2020) on the ethnic affairs, Decree 389/GoL dated 20 October 2022 on the on Environmental Impact Assessment, Public Involvement Guideline by MONRE (2012).

49. **The Lao PDR Constitution**, amended 2015, describing very generally among others the (a) socio-economic system, (b) fundamental rights and duties of citizens, (c) local administrations, and (d) judicial organs.

50. **The Land Law**, amended on June 21, 2019, outlines principles, regulations, and measures for managing land to protect livelihoods, promote peace, social order, security, justice, socio-economic development, and environmental protection. Article 130 provides that customary land use rights are acquired by Lao citizens without document certification for over 20 years before this amended law become effective, subject to village administrative authorities and adjacent landowners' ~~certification~~certification.
51. **The Road Law (2016)** states that any national road construction projects using either public or private funds can be implemented when the projects have completed Environmental and Social Impact ~~Assessment~~Assessment, and such projects have been included in the government's development plan with the National or Provincial Assembly's approval.
52. **The Law on Handling of Petitions (Grievance Redress)** No 035/President, revised and approved in 2015 provides objectives, principles and processes of applying and handling different types of grievances, petitions and complaints that may be raised by PAPs or those who believe they are PAPs. The Law on Handling of Petitions, which has superseded the old version dated November 5, 2005, applies and protects rights and interests of all citizens and entities, state organizations, community and individuals with the aim to ensure justice, social security and order. The Law on Handling of Petitions divides grievances into three categories as follows:
- a. Proposals are to be resolved by concerned authorities.
 - b. Grievances are to be resolved by judicial institutions and court
 - c. Petitions are to be resolved by Provincial and National Assembly
53. **The Law on Resettlement and Vocation** (No. 86/NA, dated 16 June 2018 or No. 204/President, dated 01August 2018) was developed based on the compensation and resettlement Decree (2016). The law, which applies for both government and private sector development projects, aims to define, regulate, manage and monitor resettlement and livelihood for Lao population of all ethnic groups to ensure that those who are in areas identified for resettlement and provided with stabilized residential and production land and occupation with ultimate goals to address illegal relocation, eliminate poverty, improve livelihood, security and social order, develop small villages into rural small towns contributing to national socio-economic development and national security.
54. **Decree on Compensation and Resettlement of People Affected by Development Projects No.84/gov**, dated April 5, 2016. The Decree outlines principles, regulations, and standards for managing loss compensation and resettlement activities in development projects. It aims to improve living conditions and contribute to sustainable socio-economic development. Consultations will be held between project owners, state agencies, and

affected households, with compensation based on state-applied prices for land, facilities, and crops.

55. **Decree No 207/GoL dated 20.03.2020 on the ethnic affairs** provides principles, regulations and measures for the management, monitoring of the ethnic affairs, protection the rights and legitimate benefits of different ethnic groups according to the Constitution and laws of Lao PDR.
56. **Decree 389/GoL** dated 20 October 2022 **on Environmental Impact Assessment** replaces Decree No 21/GoL dated 31 January 2019 defines principles, regulations and measures in the management and monitoring of the environmental impacts in order to prevent and mitigate the adverse impacts on the environment and ensure reasonable compensation, resettlement and livelihood restoration of the affected people to be better than before the project
57. **The Public Involvement Guideline** approved by Minister of MONRE in 2012 provide principles and process of engaging and consulting with project stakeholders and PAPs in project preparation and design and implementation. The public involvement aims to ensure that the stakeholders and PAPs are adequately consulted and provided with opportunity to articulate their feedback and suggestions on project design and implementation to avoid or mitigate potential impacts on their livelihood and environment.
58. **The 2013 LFND guideline on Consultation with Ethnic Groups** aims to ensure effective implementation, fair compensation for affected ethnic people's assets, and mitigation of potential environmental and social impacts, while ensuring sustainability in development projects.

3.1 World Bank Policy on Involuntary Resettlement (OP/BP4.12)

59. The OP/BP 4.12 is triggered for this Project. It requires that all investments and activities financed under the Project comply with the policy whether or not they are directly funded in whole or in part by the World Bank funds. The OP/BP 4.12 provides essential guidance on objectives and principles that are applicable in projects generating land acquisition and resettlement-related impacts. Key objectives and definitions are as follow:
 - Every reasonable effort will be made to avoid or minimize the need for “land acquisition” and to minimize all resettlement-related adverse impacts. If land acquisition and associated adverse impacts cannot be avoided, the principle objective of the RPF is to ensure that all persons subjected to adverse impacts (“displaced persons”) are compensated at “replacement cost” for lost land and other assets and otherwise provided with any “rehabilitation” measures or other forms of

assistance necessary to provide them with sufficient opportunity to improve, or at least restore, their incomes and living standards.

- The definitions on “displaced persons”, “replacement cost”, “land acquisition”, “rehabilitation”, and “cut-off-date” provided in this report will be used.

3.2 Key Differences in Lao PDR Law and World Bank Policies

60. Laws of Lao PDR address most requirements of WB’s Involuntary Resettlement Policy (OP/BP 4.12. The main objective of the project in relation to land acquisition is to the PAP and PAH to restore their livelihoods, at least, to the level equal to their pre-project level. However, definition of severely affected APs varies between World Bank’s policy at 10% and the Government’s Decree 192/PM (Article 8) at 20% of productive and/or income generating assets affected. The provisions of resettlement policies for other projects that have been agreed between Government and international donors (ADB and World Bank), the definition of severely affected – as people losing 10% or more of their productive or income generating assets – will be adopted as part of the Project’s resettlement. Detailed gap analysis between World Bank (OP/BP 4.12) and the Decree 84/GoL is summarized Table 1-1 of the Project Resettlement Framework as Annex 6 to the ESMF.

4 Types of Impact

61. Land acquisition impacts and the impacts on trees and crops as well as structures of the Phongsaly sub-projects are insignificant and limited to the agriculture land of one household in Namly and 2 HHs in Longnai Kao clusters. Some rubber ~~trees~~, ~~trees and~~ cardamom bushes will also be affected as detailed in the earlier chapter and summarized in the ~~Table 1~~ Table 1, and ~~Table 2~~ Table 2. No permanent impact is expected on the structures.

Table 1: Permanent impacts on land (Detailed data is provided in the Appendix 6)

No.	Village	Impacted by	Name of Husband	Name of Wife	Ethnic	Type of Agricultural land	Total Agricultural Area (m2)	Affected area (m2)	% of the impact to total Agricultural land
1	Namly	WTP	Mr. Alor	Ms. Me O	Akha	Cardamom garden	14.800	480	3%
2	Longnao Kao	Access Rd to WTP	Mr. Khamxay	Ms. Teang	Phunoi	Rubber garden	32.100	630	2%
3	Longnao Kao	Access Rd to WTP	Mr Yot	Ms Lee	Yang	Fallow land	46.300	600	1%

Source: DMS Survey August 2023

Table 2: Permanent impacts on trees and crops

No.	Village	Impacted by	Name of Husband	Name of Wife	Ethnic	Tres/crops	Number tree/bushes affected
1	Namly	WTP	Mr. Alor	Ms. Me O	Akha	Cardamom bushes	480 m ²
2	Sophun	Access Rd to WTP	Mr. Khamnoh	Ms. Feng	Tai Deng	17 years old rubber tree	6
3	Sophun	Access Rd to WTP	Mr. Phanphik	Ms. Vanh	Tai Deng	17 years old rubber tree	4
4	Sophun	Access Rd to WTP	Mr. Bounpoheng	Ms. Phong Mother	Tai Deng	17 years old rubber tree	10
5	Longnao Kao	Access Rd to WTP	Mr. Khamxay	Ms. Teang	Phunoi	5 years old rubber tree	6

Source: DMS Survey August 2023

5 Socio-Economic Profile of Affected People

62. The project will provide benefit to total 7 villages in Phongsaly province comprising of 1 village (Namly village) in Namly cluster in Samphanh district, 1 village (Sinxay village) in Sinxay cluster in Khua district, 2 villages (Sophun and Sopbao villages) in Sophun cluster in Mai district, and 3 villages (Longnai Kao, Longnai Mai and Bor Noy villages) in Longnai-Kao cluster in Bountai district in Phongsaly province. As mentioned earlier the affected households are mainly in the access road to WTP and the right of way, the access road to intake, and raw water supply, distribution pipeline. [Detailed](#) information on the affected households is summarized in this chapter.

5.1 Characteristics of the AHs (Demography, ethnicity, and religions)

63. [Table 3](#) below shows that altogether there are 6 permanent AHs with the total population of 29 people of whom 15 are females. Along the access road to WPT in Namly cluster in Samphanh district 1 HH will be affected, with total population of 4 people, of whom 2 are females; the access road to WTP in Sophun cluster in Mai district 3 households will be directly affected with total of 11 affected people, of whom 5 are females; while along access road to WTP in Longnai-Kao cluster, Bountai district, there are 2 affected households, with total of 14 affected people, of whom 8 are females.

Table 3: Affected households and population

No	Village	Number	Population	Female
I	Namly cluster			
1	Namly	1	4	2
II	Sophon cluster			
1	Sophon	3	11	5
III	Longnai-Kao cluster			
1	Longnai-Kao	2	14	8
	Total	6	29	15

Source: DMS in August, 2023

64. One and three affected households are a Yang³ and Tai Deng (Lao-Tai linguistic group) ethnic groups respectively; while one AH is Akha, and another one is Phounoy AH (Chinese-tibetan linguistic group). With the exception of the female elderly, the male elderly and the young generation of the Akha ethnic groups are well integrated into the Lao society and they can speak and understand Lao language.

Table 4. Ethnic group in affected village households

No	Village	Number	Lao	Tai Deng	Akha	Phounoy	Yang
I	Namly cluster						
1	Namly	1	0	0	1	0	0
II	Sophon						
1	Sophon	3	0	3	0	0	0
III	Longnai-Kao						
1	Longnai-Kao	2	0	0	0	1	1
	Total	6	0	3	1	1	1

Sources: Social-Economic survey in August, 2023

65. The affected households believe in animism or Buddhism. The Akha, and Yang practice some spiritual activities for their protection and lucks from spirits of their ancestors. When sickness, illness or bad luck happens, they organize ritual ~~ceremony~~ceremonies, slaughter animals and offer alcohol to the spirits of their ancestors to help the family to overcome the bad ~~luks~~luck and illnesses.

³ Yang ethnic is an ethnic under Lao-Tai linguistic group.

Table 5. Religions in the affected households

No	Village	Number	Buddhist	Animist
I	Namly cluster			
1	Namly	1	0	1
II	Sophun			
1	Sophun	3	3	0
III	Longnai-Kao			
1	Longnai-Kao	2	1	1
	Total	6	4	2

Sources: Social-Economic survey in August,2023

5.2 Livelihood Activities and Vulnerability Households

66. Most permanent AHs are engaged in farming, especially in rice and maize cultivation for domestic markets as well as for household consumption. Only 1AH has land title for the affected agricultural land but the other 3AHs do not have land use rights certificates for their agricultural land. The Akha AH in Namly is engaged in retail trade. All affected household's heads are male.

Table 6. main occupations of the heads of Affected households

No	Village	Farmer	Retail seller	Government officer
I	Namly cluster			
1	Namly (cardamom land)	0	1	0
II	Sophun			
1	Sophun (rubber trees and cardamom)	3	0	0
III	Longnai-Kao			
1	Longnai-Kao (rubber tree land)	2	0	0
	Total	5	1	0

Sources: Social-Economic survey in August,2023

67. The Resettlement Policy Framework (RPF) of the Water Supply and Sanitation Project WSSP or the Project (P-164901) defines that certain social groups may be less able to restore their living conditions, livelihoods and income levels; and therefore, at greater risk of impoverishment when their land and other assets are affected. The Project considered for the ethnic groups and other vulnerable groups such as landless, poor, and households headed by women, disabled, elderly or children without means of support.

5.3 Ethnic Group in the project area

68. The water supply sub-project in Phongsaly have is located in an area with -diversitye ethnicityies. The Khmou ethnic shares 31.0 %; Yang ethnic shares 24.0%, and Lao shares 22.6% of all population of the target villages. Other 22.4% include Tai Deng, Yang, Akha, Phounoy. [See Appendix 20.](#)

69. **Table 7** reveals that temporary affected households includes 41 Khmou, 18 Yang, 17 Tai Deng, both Yang and Tai Deng are the Lao-Tai linguistic group. With the exception of the female elderly, the male elderly and the young generation of the Khmou group are well integrated into the Lao society and they can speak and understand Lao language.

Table 7. Ethnic of temporary affected households on agricultural land by raw water pipes

No	Village	Total No. of HHs	Tai Deng	Khmou	Yang
I	Namly cluster				
1	Namly	32	0	32	0
II	Sinxay Cluster				
1	Sinxay village	9	0	9	0
III	Sophun				
1	Sophun	17	17	0	0
IV	Longnai-Kao				
1	Longnai-Kao	18	0	0	18
	Total	76	17	41	18

70. The ethnic group composition of the 32 temporary AHs with house front yard or cement slabs connecting to the roads' ROW include 7 Lao Tai, 5 Tai Deng, 16 Khmou, 2 Hmong and 2 Phounoy and Hor ethnic groups. All ethnic groups are well integrated into the Lao society, and they can speak and understand Lao language.

Table 8. Ethnic of temporary affected households on agricultural land by raw water pipes

No	Village	Total No. of HHs	Lao Tai	Tai Deng	Tai Dam	Khmou	Hmong	Phounoy & Hor
I	Namly cluster							
1	Namly	10	0			10		0
II	Sinxay Cluster							
1	Sinxay village	13	7			4		2
III	Sophun							
1	Sophun	9	0	5	2	0	2	
IV	Longnai-Kao	0						
	Total	32	7	5	2	16	2	2

- 71.

The key informant interview and focus groups discussions with Khmou, Yang, Tai, Akha and Phounoy communities have taken place. Total participants and their ethnic groups are shown in [Table 9](#).

Table 9. Ethnic participants in consultation meetings

Date	Location	Participants			
		Agency	Total	Female	Ethnic
10/08/2023	Sinxay	Village Authority, villagers, PIU, PMU staff	28	10	Akha\ Khmu\Phounoy\ Laol Tai
10/08/2023	Sobnao	Village Authority, villagers, PIU, PMU staff	22	2	Lao Tai
12/08/2023	Namly	Villagers	68	8	Akha\ Khmu\Phounoy\ Laol Tai10/08/2023
01/02/2024	Longnai Kao	Village Authority, villagers, PIU, PMU staff	43	1	Yang
01/02/2024	Longnai Mai	Village Authority, villagers, PIU, PMU staff	39	13	Yang
01/02/2024	Bornoi	Village Authority, villagers, PIU, PMU staff	11	2	Phounoy
08/10/2024	Sinxay	Village Authority, villagers, PIU, PMU staff	76	36	Akha\ Khmu\Phounoy\ Laol Tai
09/10/2024	Longnai Kao	Village Authority, villagers, PIU, PMU staff	43	1	Yang
10/10/2023	Longnai	Village Authority, villagers, PIU, PMU staff	70	4	Yang
10/10/2023	Namly	Village Authority, villagers, PIU, PMU staff	85	16	Akha\ Khmu\Phounoy\ Laol Tai
11/10/2024	Bornoi	Village Authority, villagers, PIU, PMU staff	37	1	Phounoy
12/10/2024	Sobnao	Village Authority, villagers, PIU, PMU staff	36	11	Lao Tai
12/10/2024	Sophon	Village Authority, villagers, PIU, PMU staff	46	7	Khmu\Thaideang
Total			604	112	

72. The expected benefits reported by ethnic communities were mainly related to better quality and 24 hours supply of water from the project to each household, time saving for women and children on water collection due to shifting from community water supply and natural sources, reduced household expenditures on water and improving health through increasing of year-round clean water availability.

73. Khmou, Hmong, Tai, Deng, Phounoy and Yang women in the communities also reported positive perceptions of the sub-projects and they were aware of the planned subproject activities. In addition to the time and financial saving from improved water infrastructure, women also reported the improved safety that they expect from having potable water supply connected inside the house.

74. Some concerns associated with civil works raised by different ethnic groups during consultation meetings include the following:

- i. Soil excavation for pipe laying may possibly ~~ea~~use-of~~ca~~use challenges of access to houses and home-based business operations.
- ii. Soil excavation for pipe laying may possibly cause of damage to rubbers trees and cash crops.
- iii. Soil excavation for pipe laying may possibly ~~ea~~use-of~~ca~~use damage to cement slabs along the RoW of the main roads.
- iv. Workers and company are not aware of the ethnic norms and traditional practices and may possibly violate those restricted practices, especially during spiritual praying/traditional healing time period, sacred places of the Khmou, Hmong, Tai Deng, Phounoy and Yang.
- v. Strict penalties apply for those who violate the Khmou, Hmong, Tai, Deng, Phounoy and Yang norm and traditional practices may possibly lead to tension between the villagers and workers.
- vi. Most of Khmou, Hmong speak their language at home while the majority of the workers are Lao. The language barrier may result in ineffective communication between the workers and senior female members of Khmou, and Hmong during ~~day to day~~day-to-day work for pipe laying. Communication barriers with the ethnic women will be addressed through hiring of the ethnic translators at the community level during the civil works and through visual aids such as posters or pictures at the construction sites

75. Concerns raised by the ethnic groups on the water pipe connection

(1) No clear information on subsidies program for poor and vulnerable households, especially the households who have no toilet and have no money and labor for ~~constructing~~construction. It will be addressed by the universal free water supply connection is the policy of the project.

(2) Concerns about high tariff rate that may affect their monthly expenses.

76. The summary of positive and negative impacts associated with project as well as ~~as~~ ~~respective~~ ~~as~~ ~~respective~~ mitigation measures are set out in ~~Table 10~~ ~~Table 10~~ ~~Table 10~~ below

Table 10. Project's positive and negative impacts and mitigation measures

No .	Expected impacts/concerns raised by ethnic people	Avoidable measures	Mitigation/beneficial measures	Implementation arrangement/Reporting
I.	Positive impacts			
1.1	Improve access to clean and safe water	N/AP	The project will provide clean and sufficient water supply for all households, convenient in water use in their households, and save time for fetching water from stand pipes stand pipes /stream or river.	Quarterly and annual environment and social monitoring report.
1.2	Improved health	N/AP	Improved access to health services, access to clean and safe drinking water, improved sanitation and hygiene associated with water is available.	Quarterly and annual environment and social monitoring reports
1.3	Economic improvement	N/AP	Long term expected economic improvement for both men and women due to increased service shops in the villages such as beauty salon, restaurant, car washing service, etc...	Quarterly and annual environment and social monitoring reports
1.4	Consultation, participation and grievance redress.	N/AP	Affected people have been consulted on the impacts during the preparation of this ARAP. Cut-off Cutoff date has been announced. Communities in the project area, in	Quarterly and annual environment and social monitoring reports

No .	Expected impacts/concerns raised by ethnic people	Avoidable measures	Mitigation/beneficial measures	Implementation arrangement/Reporting
			<p>general, to be fully informed and consulted on all aspects of the project affecting them in culturally appropriate and inclusive manner Grievance redress mechanism to operate in an effective and culturally appropriate manner.</p>	
II	Negative impacts			
1	Possible pipeline laying pass through house and extensions for pipeline laying	Installing the pipelines close to the existing road shoulder which is outside house and cement slabs	Yes, in some cases the contractor can apply manpower to excavate soil in front of the houses for pipeline laying	Monthly site monitoring by PIU and report to PMU and include in monthly/quarterly Environmental and Social Monitoring Report (ESMR).
2	Soil excavation may possibly result in blocking of access to house and home-base business operations	No	Contractor to provide access to houses and shops within 1 day after excavation and restore the affected areas within 7 days after completion of the civil works at each section	Confirmed and agreed with the ethnic groups during consultations. Monthly site monitoring by PIU and report to PMU.
3	Soil excavation for raw water pipes and the access roads to the WTPs may possibly cause damage to rubber trees and cash crops	No	Yes, in some case the contractor can apply manpower to excavate soil between rubber trees or cash crops for pipeline laying. Consult with the villagers on voluntary	Monthly site monitoring by PIU and report to PMU and include in Environmental and Social Monitoring Report (ESMR).

No .	Expected impacts/concerns raised by ethnic people	Avoidable measures	Mitigation/beneficial measures	Implementation arrangement/Reporting
			contribution if impacts were unavoidable	
4	Soil excavation may possibly cause of damage cement slabs linked to the RoW of the main roads	No	Contractor to restore the affected areas within 7 days after completion of the civil works at each section	Monthly site monitoring by PIU and report to PMU and include in Environmental and Social Monitoring Report (ESMR).
5	Workers are not aware of ethnic norms and cultural practices and may possibly violate those restricted practices especially during spiritual praying/traditional healing time periods, commonly it is up to two weeks or a month. Ethnic groups may have different practices and <u>penalties</u> .	Yes, contractor to carry out consultation with ethnic groups before starting civil work and agree on schedule of any possible ceremonies and then avoid proceeding work for those specific section	Contractor to have an orientation session with their Lao and foreign workers on the specific ethnic groups cultures and advise them to respects those believe and not violate during the civil work. All workers must sign <u>code of conduct</u> with ethnic culture sensitive.	Specific consultation recommendation is provided in Recommended Action. List of attendants should be reported with sex and ethnic disaggregated data.
6	Strict penalties applied for those who violate <u>the ethnic norms</u> and cultural practices may possibly lead to conflict between ethnic <u>groups</u> and workers.	Yes, consult with ethnic elderly and completely avoid working in those period	Yes, consult and involve with ethnic elderly for conflict resolution and mediation. “Does and Don’t” related to the ethnic norms to be included in the worker’s contracts.	GRMC focal point from PIU is very well aware of ethnic groups culture and languages. Any complaint made shall be reported with sex and ethnic disaggregated data

No .	Expected impacts/concerns raised by ethnic people	Avoidable measures	Mitigation/beneficial measures	Implementation arrangement/Reporting
7	Most of ethnic <u>groups</u> are using their language at home while vast majority of worker are Lao. The language barrier may result in ineffective communication from contractors and ethnic residents during Day-to-day works for pipe laying	Yes, prior consultation is <u>essential</u> and simultaneous translator is recommended during day-to-day construction work for any specific and critical communication with ethnic.	Yes, prior consultation is <u>essential</u> , and simultaneous translator is recommended during day-to-day construction work.	List of attendants for any consultation shall be reported with <u>sex-gender</u> and ethnic disaggregated data.
Concerns raised by the ethnic residents during the operations of water pipe connection				
8	No clear information on subsidies program for poor and vulnerable households	Detail explanation on Gov subsidy program for the right to purchase clean water for poor family applying on 'Water for the poor' on subsidized Household connections		All these recommended actions shall be implemented by PMU/PIU with the support from Social and gender specialists and reporting into semi-annual safeguard monitoring report with <u>sex-gender</u> and ethnic disaggregated data. No. of ethnic household connection shall be reported to PMU <u>disaggregated by with sex-gender disaggregated by and ethnic data</u> status.
9	Concerns about high tariff rate of water usage per cubic meter that may lead to higher pay on monthly basis.	Clear explanation on specific tariff rate compares against amount of water usages		

6 Eligibility, Entitlement, and rehabilitation of the permanent impacts

77. The 3 permanent AHs are eligible to compensation of minor losses of their productive land (less than 5%) though all affected couples have signed agreement on voluntary contribution of their affected agricultural land to the project, they are entitled to the ~~in-kind~~ in-kind compensation in the form of land upgrading or the issuance of land use certificates.
78. The 76 HHs in 4 villages are eligible to restoration of the temporary impacts associated with Raw Water Pipelines installation on their productive land.
79. The 32 HHs in 3 villages are eligible to restoration of the temporary impacts the temporary impacts to their cement slabs in front of houses by the clean water pipelines.
80. The following entitlement matrix is developed based on the type of loss associated with the Project. Most AHs are considered as the temporary affected ~~people~~ people, so they are entitled to the restoration of their affected agricultural land and cement slabs as well as land in front of the houses.
81. The crops/jobs' tear cultivated on the fallow land will not be affected because the pipeline will be laid out in dry season when there is no standing crop in the field.

Table 11. The entitlement matrix of the project affected people

Type of loss	Definition of APs	#of AH	# of PAPs	Entitlement
i. Loss of Land				
Namly village, Namly Cluster water supply				
Permanent Affected Land				
A-1 Agricultural land	Legal owners with land titles or occupants with customary ownership certificates by village authorities identified during the detail measurement survey (DMS)	1	4	The AP, Mr Alor, agreed in voluntary contribution of the affected portion of 480 m ² . Despite his voluntary contribution he will receive support in grading the remaining area of the affected plot during civil works that will be supported by the Samphanh district authorities. Issuance of new land title for the remaining area of the affected plot at the cost of the Project.
A-2 Residential land	As above	0	0	No impact

Type of loss	Definition of APs	#of AH	# of PAPs	Entitlement
Temporary Affected during the construction				
B-1 Agricultural land by the Raw Water Pipes installation	Legal owners with land titles or occupants with customary ownership certificates by village authorities identified during the detail measurement survey (DMS)	32	155	Raw water pipeline will be laid out underground at a depth between 0.7-1.2 m throughout the land and the affected area will be restored by the Contractor to original condition within 7 days after the completion of the civil work at each section
Sinxay Village, Sinxay Cluster water supply				
Permanent Affected Land				
A-1 Permanent land	Legal owners with land titles or occupants with customary ownership certified by village authorities identified during the detail measurement survey (DMS)	0	0	No impact
A-2 Residential land	As above	0	0	No impact
Temporary Affected during the construction				
B-1. Agricultural land by the Raw Water Pipes installation	Legal owners with land titles or occupants with customary ownership certificates by village authorities identified during the detail measurement survey (DMS) and before the cut-off cutoff date	9	35	Raw water pipeline will be laid out underground at a depth between 0.7-1.2 m throughout the land and the affected structure will be restored by the Contractor to original condition within 7 days after the completion of the civil works at each section
B-2. Residential land	As above	0		No affected
B-3 Public land	As above	0		No affected
B-4 Service land	As above	0		No affected
Sophun Cluster water supply				
Permanent Affected Land				
A-1 Agricultural land	Legal owners with land titles or occupants with customary	0	0	

Type of loss	Definition of APs	#of AH	# of PAPs	Entitlement
	ownership certificates by village authorities identified during the detail measurement survey (DMS)			
A-2 Residential land	As above	0	0	
Temporary Affected during the construction				
B-1. Agricultural land	Legal owners with land titles or occupants with customary ownership certificates by village authorities identified during the detail measurement survey (DMS)	17	72	Raw water pipeline will be laid out underground at a depth between 0.7-1.2 m throughout the land and the affected structure will be restored by the Contractor to original condition within 7 days after the completion of the civil works at each section
B-2. Residential land	As above	0		No affected
				Clear water pipelines will be laid out underground at a depth between 0.7-1.2 m throughout the land and the affected structure will be restored by the Contractor to original condition within 7 days after the completion of the civil works at each section
Longnai-Kao cluster water supply				
Permanent Affected Land				
A-1 Agricultural land	Legal owners with land titles or occupants with customary ownership certificates by village authorities identified during the detail measurement survey (DMS)	2	14	The 2AHs, Mr Khamxay and Mr Yot agreed Yot agreed in on voluntary contribution of the affected portions plots of land . Despite their voluntary contribution they will receive support in land leveling and issuance of land use certificates for the remaining area of the

Type of loss	Definition of APs	#of AH	# of PAPs	Entitlement
				affected plot at the cost of the Project.
A-2 Residential land	As above	0	0	
Temporary Affected during the construction				
B-1. Agricultural land	Legal owners with land titles or occupants with customary ownership certificates by village authorities identified during the detail measurement survey (DMS)	18	80	Raw water pipeline will be laid out underground at a depth between 0.7-1.2 m throughout the land and the affected structure will be restored by the Contractor to original condition within 7 days after the completion of the civil works at each section
B-2. Residential land	As above	0		No affected
ii. Loss of Crops and Trees				
Namly				
D-1 Cardamom	Owners of 480 m2 or about 50 bushes of cardamom	1	4	Affected households agreed with voluntary contribution. However, they will be allowed to harvest cardamom in October before the civil works and then they will be supported by DIU to sell the affected cardamom bushes to other households or to grow it in other plots.
Sinxay cluster				
D-1 Rubber /crops	Owners (None)	0		
Sophun Cluster				
D-1 Rubber trees	Owners of the 20 affected rubber trees	3	11	Affected households agreed with voluntary contribution
Longnai-Kao Cluster				
D-1 Rubber trees	Owner of the 6 affected rubber tree	1	5	Affected household agreed with voluntary contribution
iii. Affected structures				
Namly				
E1. Cement slabs within the RoW	Owner of the structure	10	55	180 meters long for installation of clear water

Type of loss	Definition of APs	#of AH	# of PAPs	Entitlement
				pipelines underground. the affected structure will be restored by the Contractor to original condition within 7 days after the completion of the civil works at each section
Sinxay				
E1. Cement slabs within the RoW	Owner of the structure	13	60	1,162 meters long for installation of clear water pipelines underground. the affected structure will be restored by the Contractor to original condition within 7 days after the completion of the civil works at each section
Sophon				
E1. Joined Concrete extension yard with the road's right of way	Owner of the structure	9	47	848 meters long for installation of clear water pipelines underground. the affected structure will be restored by the Contractor to <u>original</u> condition within 7 days after the completion of the civil works <u>at</u> each section. Photos are provided at Appendix 18
Longnai-Kao				
E1. Joined Concrete extension yard with the road's right of way	Owner of the structure	0		No affected.

7 Public Consultation, Participation, and Information Disclosure

82. The consultation process follows 4 core principles below:

- i) supporting the government in taking responsibility for assuring public involvement;
- ii) undertaking public involvement activities in a flexible manner, adapting and responding to Lao PDR's particular national and local circumstances;
- iii) making public involvement activities broad-based and sustainable; and

iv) carrying out activities in a transparent and open manner and providing full documentation of public involvement

83. The main objectives of the consultation were to:

- a. inform the villagers on the objective of the project;
- b. know the perception of local authority on the implementation of the project;
- c. understand worries and concerns over the water supply project; and
- d. to establish and ~~seek for~~seek community support for the project implementation.

84. After public consultation, separate meetings have been carried out with the individual heads of the potential affected households to inform them about the preliminary result of the detailed measurement survey, their affected structures and their entitlements including the cost for their affected land and trees/crops. See Appendix 6 on the Declaration of Compensation Costs.

85. In addition, after the completion of the conceptual design, meeting was carried out with the provincial and district grievance committee as well as technical staff of the provincial PIU and central PMU to review the preliminary Inventory of Loss (IoL), collected in May 2023. During the second DMS in February and October 2024, the PAPs have been refreshed about the cut-off-date, their entitlements. Summary of participants in public consultation are shown in below.

Table-12. Comments from Project Affected People

Comments	Response
I. Water system design and Civil work	
<p>The design should avoid the impact on existing structures</p>	<p>The water supply system design has been prepared to avoid adverse impacts as much as possible on the existing structures in the village.</p> <p>The pipeline laying design should be depth enough underground where it passes the agricultural land area to avoid any adverse impact. The pipeline laying design should be avoided<u>avoid</u> burreiald sites of the dead people.</p> <p>The sensitive section along the residential area will be closely monitored during the civil works.</p> <p>If possible, the design should lay out the pipeline in the back yard of the houses.</p>

<p>There must be close monitoring of civil works during the construction phase in order to avoid impacts on the structures especially the houses along the main water pipeline</p>	<p>Construction Supervision Consultants have been hired under the PIA to monitor environmental and social impacts and inspect the quality of the civil works.</p> <p>In addition, grievance committees have been set up at the village, district, provincial and central level to help with grievance redress procedures during the pre and construction phases.</p>
<p>Training must be provided to the villagers on safety issues and signs</p>	<p>ESMP has been developed<u>developed</u>, and it will cover occupational health and community health and road safety. With the support of the Construction Supervision Consultant, the Contractor will be responsible in<u>for</u> ensuring trainings<u>training</u>/workshops to the workers as well as community members are being organized.</p>
<p>II. Voluntary donation</p>	
<p>Access constraints to houses during the civil works</p>	<p>The AHs will be provided with immediate temporary access during the civil<u>civil</u> works and access to the hose will be restored after its completion.</p>
<p>The villagers are willing to contribute minor resettlement impacts because they want to have better access to clean water in their villages</p>	<p>Willingness in the voluntary contribution is highly appreciated but the project has a compensation approach that agreed by the government in the resettlement policy framework.</p> <p>This issue will be reported to the provincial and district grievance committees and consulted with relevant legal frameworks and the relevant standard of WB.</p> <p>DMS survey results including the costs of compensation have been discussed with all affected household before they agreed with voluntary contribution</p>

86. The entitlements in the preliminary draft of this ARAP have been consulted with the heads of the AHs. After the approval of this ARAP, information disclosure will be done through meetings with the heads (husband and wife) of AHs, village loudspeakers and posted on MPWT's websites

8 Grievance Redress Mechanism

87. Part VI of Decree 84/GoL requires the Project to establish an effective mechanism for grievance resolution. A well-defined grievance redress and resolution mechanism will

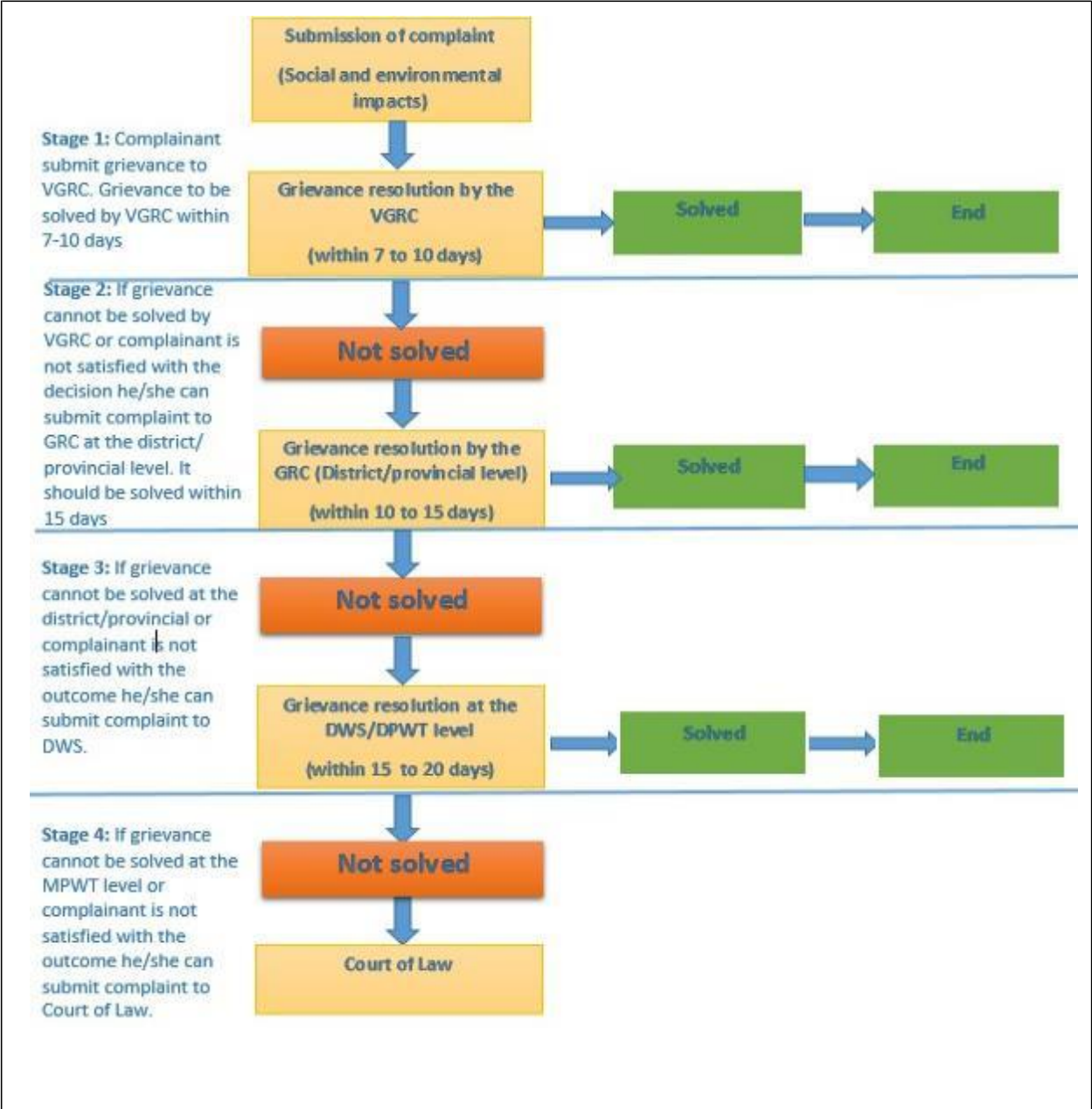
be established to resolve grievances and complaints in a timely and satisfactory manner. The objective of the grievance redress mechanism is to resolve complaints as quickly as possible and at the local level through a process of conciliation; and, if that is not possible, to provide clear and transparent procedures for appeal. All affected persons will be made fully aware of their rights, and ~~the detailed~~detailed grievance redress procedures will be publicized through ~~an effective~~effective public information sessions.

88. The grievance mechanism is based on key principles that will protect the rights and interest of project participants; ensure that their concerns are addressed in a prompt and timely manner, and entitlements are provided in accordance with GoL and Bank safeguard policies. PIU/DPWT will ensure that communities directly affected by the Project have a full understanding of the GRM and ways to access it especially on (i) the concept of compensation for any involuntary acquisition of land and/or assets and (ii) ensuring environmental and social mitigation measures in the ESMP's are implemented as planned. APs are entitled to lodge complaints regarding any aspect of the environmental and social impacts associated with the Project. The AP's complaints can be made verbally or in written form to the GRC or, alternatively, raise his/her voice in a public or individual meeting with project staff.
89. The ESMF contains the full details on the GRM for the project. Grievances related to environmental and social issues from ethnic groups that result from Project activities will be resolved by the Grievance Redress Committee (GRC) through the Project GRM presented in Figure 4 in general. However, the complainant also retains the right to bypass this procedure and can address a grievance directly to the DPWT Office or PPWT or the Provincial Assembly, as provided for by law in Lao PDR. At each level grievance details, discussions, and outcomes will be recorded in a grievance logbook of which the template is provided in Appendix 7 of the ESMF. The status of grievances submitted, and grievance redress will be reported to DPWT management through the monthly report.
90. The proposed grievance redress procedures during the WSS sub project can be summarized below:
 - a. **Stage 1:** In the first instance, APs will address complaints on any aspect of compensation, relocation or unaddressed losses to the Village Grievance Redress Committee (VGRC) or other designated village grievance officers including the ethnic elderly who is well respected in the village. The VGRC will organize a meeting with the complainants to resolve the issue using its traditional methods of conciliation and negotiation; the meeting will be held in a public place and will be opened to other Aps and villagers to ensure transparency. The VGRC aims at clarification and amicable solution agreed with the subproject.
 - b. **Stage 2:** If after 10 days of lodging the complaint, no understanding or amicable solution can be reached or no response is received from the Village Grievance Redress Committee, the complainant can bring the complaint to the

District/Provincial GRC. The District/Provincial GRC will be involved to meet with the complainant and VGRC to discuss the complaint, and provide a decision at mutual arrangement within 15 days of receiving the appeal.

- c. **Stage 3:** If the AP is still not satisfied with the decision of the PGRC, or in the absence of any response within the stipulated time, the complainant can submit his/her grievance to Department of Water Supply. The DWS will act on behalf of the MPWT. It may consider to seek external opinion on this matter and the appeal must be solved within 20 days of receiving the appeal.
- d. **Stage 4:** As a last resort, the AP may submit his/her case to the Court of Law. The complaint will be lodged with the Court of Law; the decision of the Court will be final.

Figure 5: Grievance Procedures



91. Different ethnic groups in Lao PDR have their own spoken languages. However, the ethnic groups do not have written language. Lao letter is the only written language that different ethnic people use for communication. Thus, the GRM process as well as grievance resolution flow chart will be translated into Lao language and will be disseminated via community meetings and printed out on poster and posted at the village offices, community halls, markets, or temples where community members can easily see it. PAP can make [complaintcomplaints](#) or appeal on all aspects of project design and implementation, including issues related to resettlement in written form or verbally and it can be anonymous if the PAP does not want to disclose itself. Ethnic translator will be used to helps in communicating with the ethnic complainant who do not speak Lao. The feedback Form

will be developed under this Project and made available at villages in project areas including where PAP live, for use by PAP to raise complaints or grievances. PAP will be clearly informed of the complaint and appeal channels described above through village meetings and other channels.

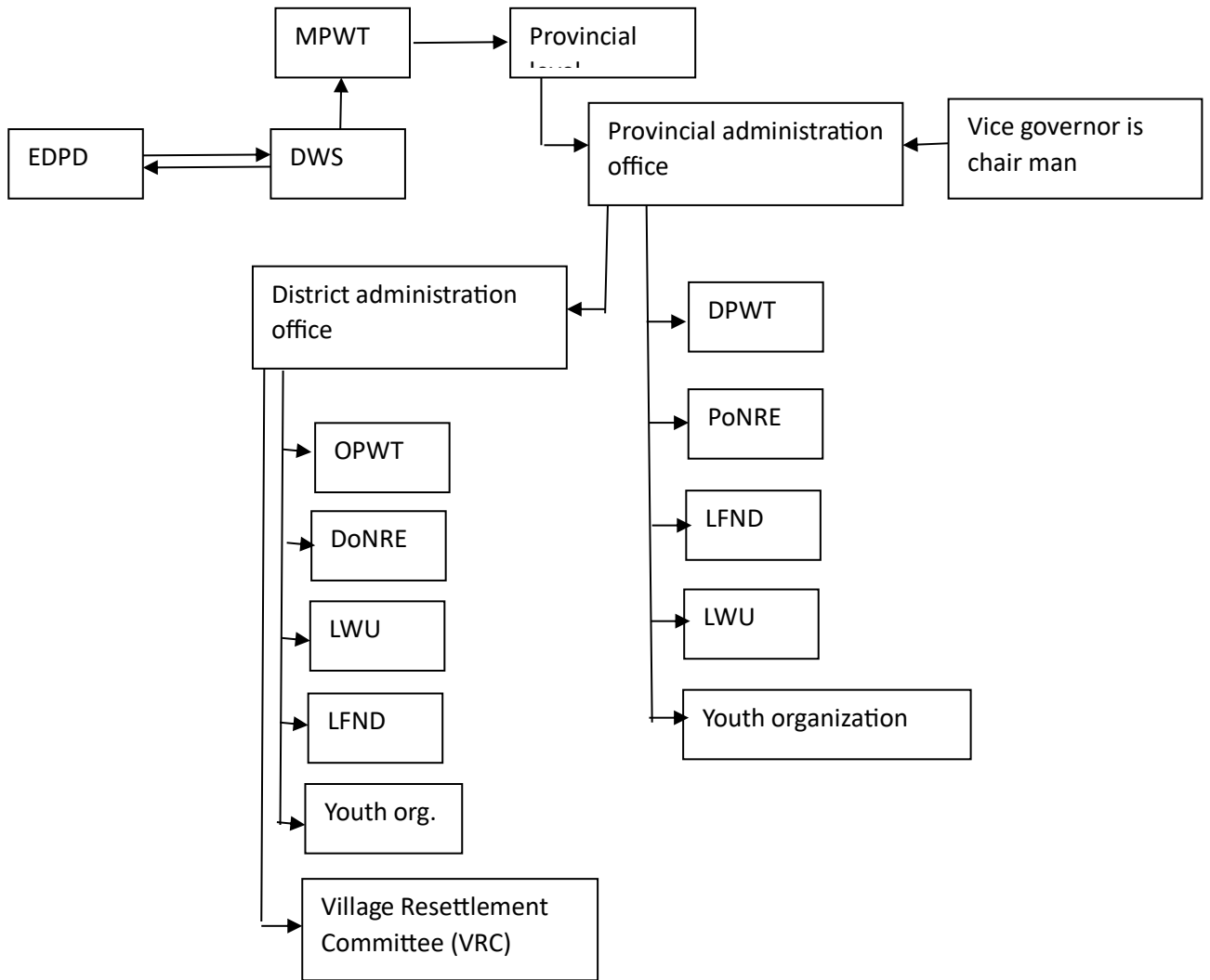
92. Media tools should be used to communicate ~~the information~~ information. Opinions and suggestions on resettlement provided by various people and organizations should be documented and resettlement organizations at various levels should study and address these issues in a timely manner. The list of contact person for grievance procedures is summarized in the following Table 13.

Table 13: List of contract persons at the provincial and district levels

No.	Name	Position	Phone
Phongsaly Province			
1	Mr. Khaokham Southammavong	Phongsaly DPWT	02023909222
2	Mr. Maody Siththikhoun	Samphanh district, PWT Office	02091199331
3	Mr. Oudeth Manyvong	Khua district, PWT Office	02028765430
4	Mr. Chommany Vilavong	Mai district, PWT office	02055033435
5	Mr. Khamsean	Bountai district, PWT office	02097777568

93. The organizations addressing the affected people's complaints and appeal shall not charge any fee. Any expenses incurred due to complaint and appeal should be paid as unexpected expenses by ~~relevant~~ the relevant project implementation agency. To make GRM more efficient and timelier responsive, contract details including phone numbers of responsible site engineers and focal points at PPWTs will be provided in the project information leaflet to be prepared and distributed to all Project Affected Households (PAHs) and Project Affected Villages (PAVs).
94. The communities and individuals who believe that they are adversely affected by a WB-supported project may submit complaints to existing project level grievance redress mechanism or the WB's Grievance Redress Service (GRS). The GRS ensures that complaints received are promptly reviewed in order to address ~~project related~~ project-related concerns. Project affected communities and individuals may submit their complaints to the WB's independent Inspection Panel which determines whether ~~harms~~ harm occurred, or could occur, as a result of WB non-compliance with its policies and procedures. Complaints may be submitted at any time after concerns have been brought directly to the WB's attention, and Bank Management has been given an opportunity to ~~responds~~ respond. For information on how to submit complaints to the World Bank's corporate Grievance Redress Service (GRS), please visit www.worldbank.org/grs. For information on how to submit complaints to the World Bank Inspection Panel, please visit www.inspectionpanel.org.

Figure 6: Organization for Resettlement and Compensation Committee for SWSSHP



9 Implement Schedules

95. ~~Concrete~~The concrete extension yard in front of house or service facility of the RP for PAPs cannot commence until GoL and WB has approved the final ARAP.
96. Training village GRM committee and training villagers on safety on sign will be organized.
97. Public consultation to inform on (i) Present the entitlements in the preliminary draft ARAP and approved ARAP with the PAPs; (ii). present the compensation rate and responsibilities of parties; (iii) Each PP signs the compensation agreement; (iv) construction schedules and site supervision monitoring plan; (v) explains the safeguard risk mitigation plan and provides copies to the village authority committee
98. The implementation schedule for compensation activities is presented in the following table including:
- i. activities that have been completed to prepare the ARAP;
 - ii. resettlement implementation activities; and
 - iii. RP monitoring activities.
99. Procedures for repair of affected assets after the PAPs sign the repair agreement include the followings:
- i) PIA will compile the list of the AHs with the details of the total costs for repair of assets of ~~each the~~each affected household.
 - ii) The chairman of the district Grievance Committee and PIU to certify the compiled list of the AHs;
 - iii) PIU to approve the list of the AHs;
 - iv) During the construction phase, the contractor will restore the assets to the original condition;

Table-14: ARAP implementation Schedules

No	Main tasks	Responsible party	2023			2024				2025			
			Q2	Q3	Q4	Q1	Q2	Q3	Q4	Q1	Q2	Q3	Q4
I	ARAP preparation												
1.1	Preliminary DMS and socio-economic survey	PIA consultant, PPWT, DPWT											
1.2	ARAP approval by WB and MPWT	WB and DWS											
1.3	Training Village GRM Committee before implementing ARAP.	PIU,NK											
1.4	Training villagers on safety and signs	PIA consultant, PPWT, DPWT, Grievance Committee											
II	ARAP implementation												
2.1	Add the unit rate to repair in BOQ	PIA, Grievance Committee											
2.2	Award of civil work contract	PIU											
2.3	Public consultation to inform villagers on: (i) Present the entitlements in the preliminary draft ARAP and approved ARAP with the PAPs	PIA consultant, PPWT, DPWT, Grievance Committee, Engineer											

10 Monitoring and Reporting

100. To ensure the smooth implementation of the ARAP and achieve its objective, the project will carry out resettlement monitoring and evaluation during the construction process. Based on the RPF for this ARAP only internal monitoring will be required.

101. Internal *monitoring*: The purposes of internal monitoring are to ensure the resettlement organizations at various levels can function soundly during the implementation of ARAP and ensure the legitimate interests of the affected people will not be violated and the engineering work can progress smoothly. The internal monitoring of the project land acquisition, compensation and resettlement work should be organized by the Project Resettlement Office with provision of overall guidance from DWS of MPWT for water supply subprojects. The PIA team already has the construction supervision consultants including an environmental and social specialist who will assist the DWS of MPWT and the Project Resettlement Office, on matters related to social and environmental safeguard compliance as per the agreed ARAP and ESMP. To effectively monitor the work from the inside, the personnel responsible for this work in the resettlement organizations will participate in the development and implementation of the RP. They will participate in the internal monitoring during the implementation of the ARAP. The contents of the internal monitoring include:

- e. Overall status of ARAP implementation and restoration of assets to original condition;
- f. Supports to the vulnerable groups to address their grievances;
- g. Schedule of the activities as agreed in the ARAP;
- h. Participation and consultation of the affected people during the ARAP implementation;
- i. Staffing, training, work schedule and other operations of ARAP at various levels.
- j. Status of grievances received and addressed;
- k. Recommendations/Actions to be taken.

11 Cost/Budget

102. The total budget for compensation is ~~estimated~~estimated at about **USD 46,520** (Table ~~Table 14~~) that will include in kind compensation for the affected land. The costs for the issuance of new land title and land use certificates for 3 permanent affected land plots and grading 3 affected land plots in Namly and Longnai Kao Villages will be covered by the District Administrative Offices of Samphan and Bountai, the costs for restoration of the affected cement labs along the RoW will be covered by the contractor during the construction phase and the cost for internal monitoring will be covered by PMU.

Table 15 Total estimated cost for compensation in Phongsaly province

No.	Items	Unit costs	Unit	Affected quantity	Total cost in LAK	Total cost in USD	Remark
I Affected land							
1	Mr. Alor, Namly Village	80.000	m2	480	15.000.000	750	Compensation in the form of land upgrading and issuance of new land title. To be covered by PIU
2	Mr. Khamxay in Longnai Kao	40.000	m2	630	15.000.000	750	Compensation in issuance of land use certificate
3	Mr. Yot in Longnai Kao	40.000	m2	600	15.000.000	750	Compensation in issuance of land use certificate
Sub total I					45.000.000	2.250	
II Affeted trees/crops							
	Cardamom area of Mr. Alor, Namly Village	10.000	m2	480		-	Voluntary contribution
1	Rubber tress of 17 years old, Mr. Khamnoh in Sophun	720.000	Tree	6		-	Voluntary contribution
2	Rubber tree of 17 years odl, Mr. Phanphik in Sophun	720.000	Tree	4		-	Voluntary contribution
3	Rubber trees of of 17 years old, Mr. Bounpoheng in Sophun	720.000	Tree	10		-	Voluntary contribution
4	Rubber 3 of 2 years old, Mr. Khamxay in Longnai Kao	60.000	Tree	6		-	Voluntary contribution
Sub total II						-	
III Restoration of the affected cement slabs and RoW by the water pipes installation							
		2190		320000	700.800.000	35.040	Contractor costs
IV Internal monitoring of compensation							
		LS				5.000	Travel cost for PMU and safeguars consultant under the project admin costs
Total cost Items I to III						42.290	
VII Contingencies 10%							
						4.230	For adjustment of inflation rate and unforeseen impacts but not for the impacts associated with civil works by the Contractor
Total compensation cost						46.520	

No.	Items	Unit costs	Unit	Affected quantity	Total cost in LAK	Total cost in USD	Remark
I	Affected land						
1	Mr. Alor, Namly Village	80.000	m2	480	15.000.000	750	Compensation in the form of land upgrading and issuance of new land title. To be covered by PIU
2	Mr. Khamxay in Longnai Kao	40.000	m2	630	15.000.000	750	Compensation in issuance of land use certificate
3	Mr. Yot in Longnai Kao	40.000	m2	600	15.000.000	750	Compensation in issuance of land use certificate
	Sub total I				45.000.000	2.250	
II	Affeted trees/crops						
	Cardamom area of Mr. Alor, Namly Village	10.000	m2	480		-	Voluntary contribution
1	Rubber tress of 17 years old, Mr. Khamnoh in Sophun	720.000	Tree	6		-	Voluntary contribution
2	Rubber tree of 17 years odl, Mr. Phanphik in Sophun	720.000	Tree	4		-	Voluntary contribution
3	Rubber trees of of 17 years old, Mr. Bounpoheng in Sophun	720.000	Tree	10		-	Voluntary contribution
4	Rubber 3 of 2 years old, Mr. Khamxay in Longnai Kao	60.000	Tree	6		-	Voluntary contribution
	Sub total II					-	-
III	Restoration of the affected cement slabs and RoW by the water pipes installation	2190		320000	700.800.000	35.040	Contractor costs
IV	Internal monitoring of compensation	LS				5.000	Travel cost for PMU and safeguars consultant under the project admin costs
	Total cost Items I to III					42.290	
VII	Contingencies 10%					4.230	For adjustment of inflation rate and unforeseen impacts but not for the impacts associated with civil works by the Contractor
	Total compensation cost					46.520	

Remarks: Calculated based on Agreement of MPWT on Housing Construction Unit Cost, No.26123/PWT, dated 17 December 2021, and the approved unit cost by the governor of Phongsaly in 2022.